

# Project Profile – Maintenance Management

## TASMANIA POLICE



### Properties:

- 76 buildings located around the State
- Major Centres include Hobart Police Headquarters, Rokeby Police Academy, Launceston, Clarence, Glenorchy, Burnie, Devonport
- Office buildings, police stations, training facilities, garages, call centres

### Estimated Asset Value:

- 

### Maintenance Categories:

- Statutory
- Preventive
- Corrective
- Comprehensive (lifts)

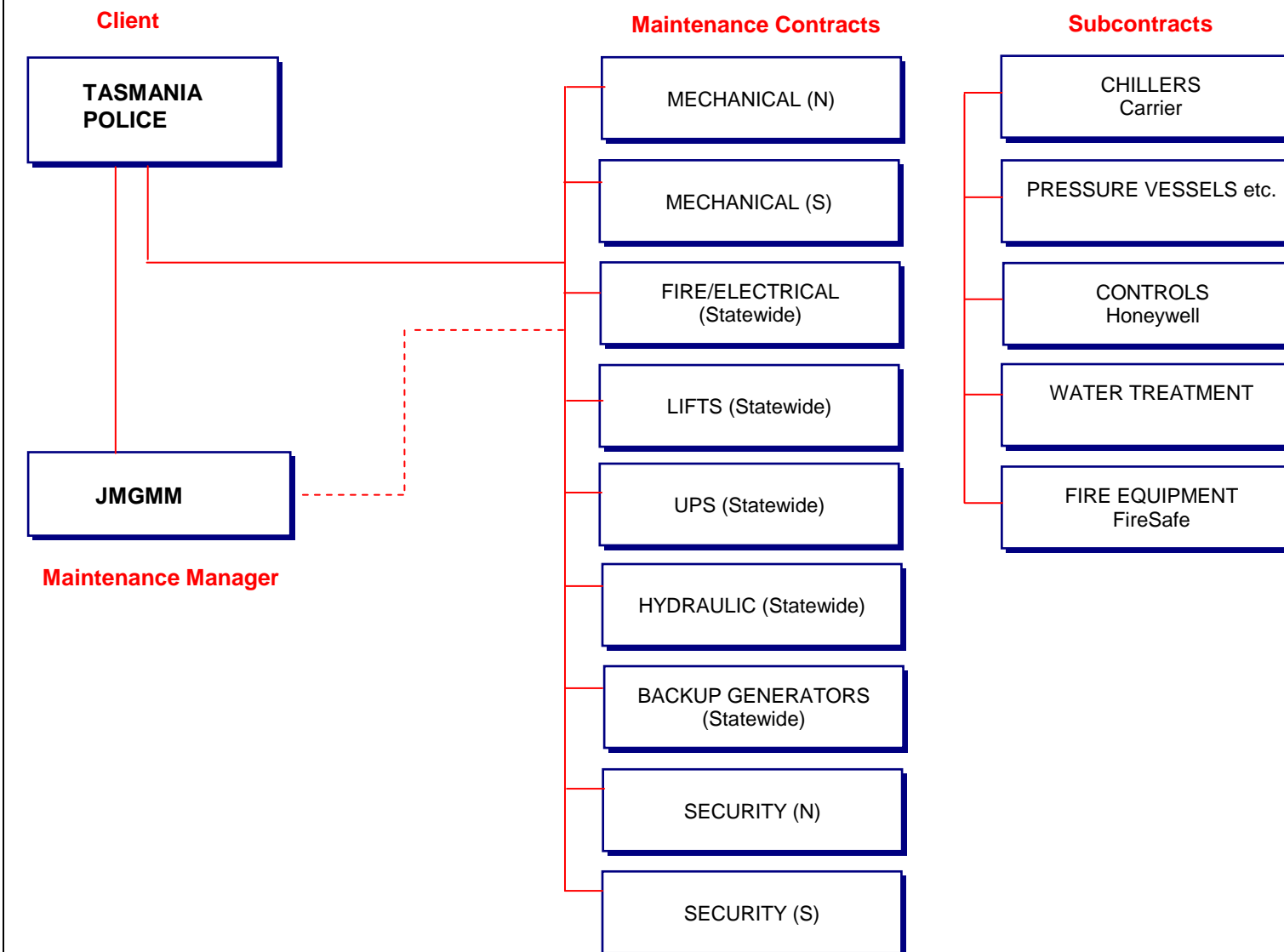
### JMG Service Level Agreement:

- Specification and tendering of maintenance
- Building Act Form 46 audits
- Quarterly maintenance audit inspections
- Processing of progress claims
- Maintenance budget planning
- Maintenance expenditure reporting
- Engineering systems performance overview

### Key Performance Criteria:

- Systems reliability and availability
- Site access and behaviour protocols
- Maintenance budget control

### Contract Hierarchy:



### Project Achievements: (to 2007)

- Maintenance Manager 2002 to present.
- Maintenance cost savings 20%
- Improved plant operational reliability
- Building Act compliance

- Asset upgrades
  - Chiller Replacement Burnie Police Station \$450,000
  - Launceston Police Headquarters \$750,000

